



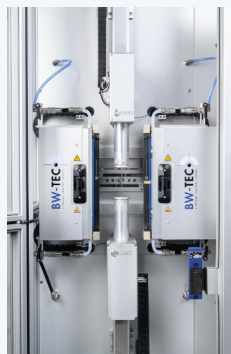
3240 SPLIT MOLD BALLOON FORMING MACHINE

Precision and new opportunities for High-Performance Medical Applications

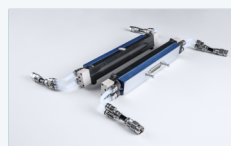
The **3240 Split Mold Balloon Machine** is the ideal solution for manufacturing a wide range of soft medical balloons. Utilizing an electrically heated stretch, pulse, and blow process, it enables highly reproducible production with outstanding quality and precise specifications.

The innovative split mold technology provides maximum design freedom, allowing the realization of complex balloon geometries. Direct heating and cooling within the mold significantly reduces cycle times while optimizing product quality. Depending on the balloon mold length, up to three individually controllable heating zones (top/middle/bottom) are available to form complex balloons.

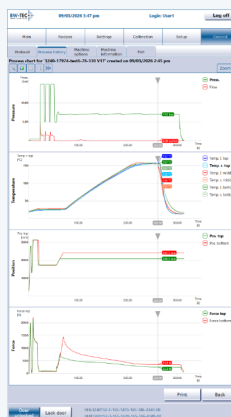
The system is equipped with a user-friendly HMI, enabling intuitive operation via touchscreen. Network compatibility allows seamless integration into existing company systems. In addition, process parameters can be stored in product-specific recipes – ensuring maximum efficiency, repeatability, and process reliability.



Split Mold Loading Position



Quick Exchangeable Split Mold



BW-TEC HMI Process Overview

Technical Specifications

up to 150 balloons per shift
process time: 2–5 min (depending on size)
process pressure: 0–50 bar (0–725 psi)
balloon diameter:
• configuration 1: 1–20 mm
• configuration 2: 1–50 mm
balloon length:
• configuration 1: 2–300 mm
• configuration 2: 2–100 mm
process temperatures: 20–200 °C (68–392 °F)
depending balloon mold length, three individually controllable heating zones (top / middle / bottom)
sound-insulated enclosure
cooling with integrated system
low pressure system 6–8 bar (87–116 psi) for product fixation
linear stretching distance: up/down 580 mm
integrated flow and force measurement
minimal tube length before stretching: 60 mm
servo drives
barcode scanner for balloon form detection
quick exchange system for the fast change of the molds
simple user Interface with BW-TEC HMI on touchscreen
PLC controller and PC for HMI and data management, network compatible
dimensions (L x W x H): 930 x 1090 x 2212 mm
weight: 375 kg
power: 110 or 230 VAC / 2000 W / others upon request